



# RIFLESSI BIETESI





Riflessi propone un'inedita collezione ispirata alle superfici di specchi anticati, ossidati da agenti atmosferici e opacizzati dal trascorrere del tempo. Ogni dettaglio è messo in risalto dalle finiture Full Lappato, Lappato Matt e Naturale che restituiscono effetti estetici e materici originali.

Declinata in quattro colori: Perla, Argento, Topazio e Zaffiro, la collezione è ideale per ambienti pubblici e privati di grande impatto visivo.

Il decoro Frammenti realizzato da schegge di specchi armoniosamente disposti sulla superficie, e il decoro Gemma, che riproduce antiche decorazioni stilizzate, adornano la collezione aggiungendo ulteriori riflessi di stile.

Riflessi is an original collection inspired by the surfaces of antique mirrors, oxidized by atmospheric agents and dulled by the passage of time. Every detail is emphasized by the Full Lappato, Lappato Matt and Naturale finishes, which produce original aesthetic and tactile effects. Available in four colours - Perla, Argento, Topazio and Zaffiro -, the collection is ideal for public and private areas with a striking visual impact.

The Frammenti decor made from mirror shards harmoniously arranged on the surface, together with the Gemma decor which reproduces old stylized decorations, adorn the collection, adding further stylistic reflections



HOME LIVING



Floor:

Topazio Full Lappato Rett.  
60x120 - 23<sup>9</sup>/<sub>16</sub>" x 47<sup>1</sup>/<sub>4</sub>"



HOME LIVING

Floor:  
Zaffi o Full Lappato Rett.  
60x120 - 23<sup>5</sup>/<sub>8</sub>" x 47<sup>1</sup>/<sub>4</sub>"



BATHROOM



**Floor:**  
Perla Full Lappato Rett. 120x278 - 47<sup>1</sup>/<sub>4</sub>" x 109<sup>7</sup>/<sub>16</sub>"

**Wall:**  
Gemma Perla Full Lappato Rett 30x30 - 11<sup>3</sup>/<sub>16</sub>" x 11<sup>3</sup>/<sub>16</sub>"  
Perla Full Lappato Rett. 60x120 - 23<sup>5</sup>/<sub>8</sub>" x 47<sup>1</sup>/<sub>4</sub>"



Calibrati riflessi di superficie donano profondità estetica ed elegante luminosità.

Calibrated surface reflections lend aesthetic depth and elegant brightness.



Perla Full Lappato Rett. 60x120 - 23<sup>5</sup>/<sub>8</sub>" x 47<sup>1</sup>/<sub>4</sub>"



BATHROOM



**Floor:**

Frammenti Mix Full Lappato Rett. 60x120 - 23<sup>5/8</sup>" x 47<sup>11/16</sup>"

**Wall:**

Topazio Full Lappato Rett. 15x60 - 5<sup>7/8</sup>" x 23<sup>5/8</sup>"

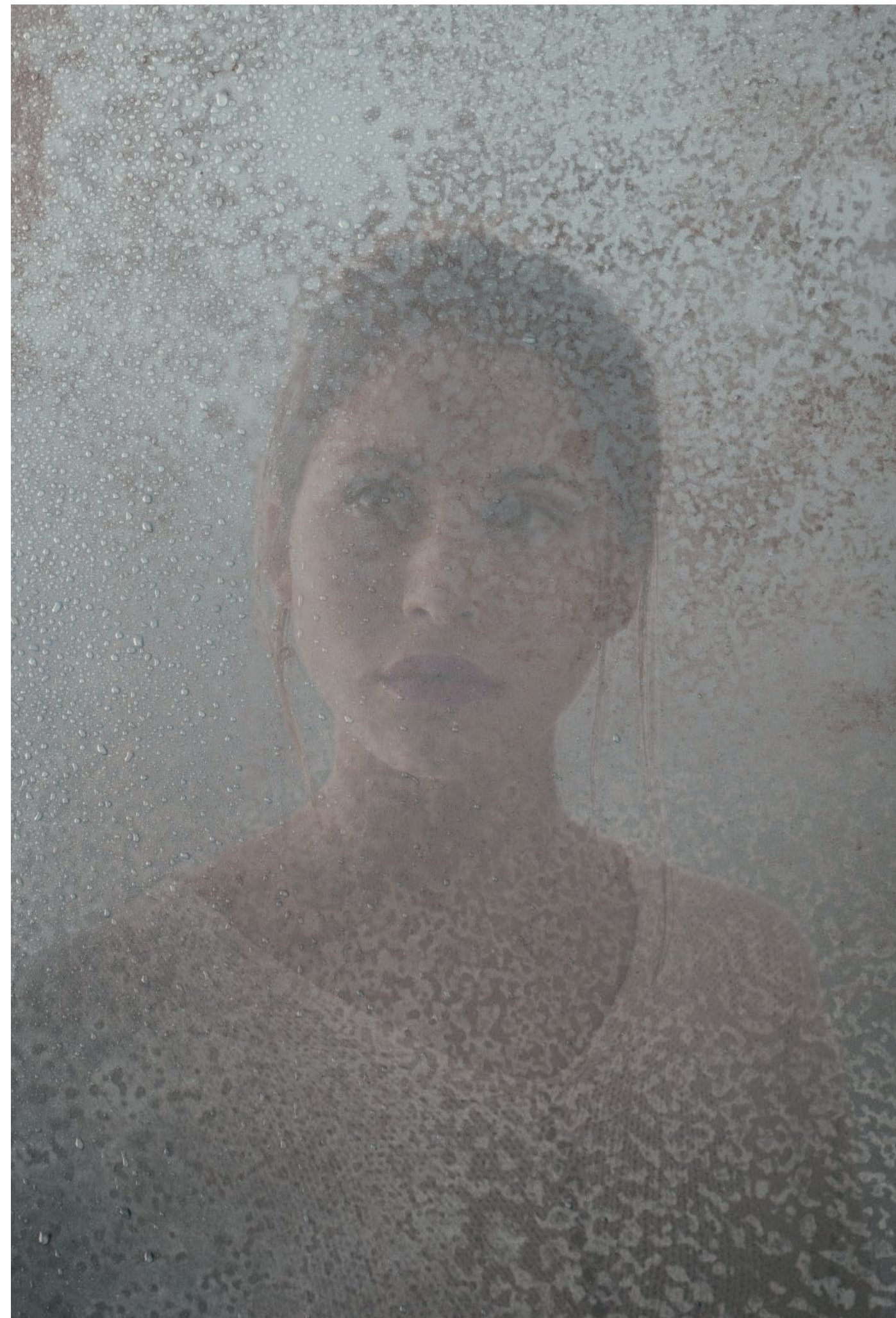
Gemma Topazio Full Lappato Rett. 30x30 - 11<sup>15/16</sup>" x 11<sup>15/16</sup>"

Topazio Full Lappato Rett. 120x278 - 47<sup>1/4</sup>" x 109<sup>7/16</sup>"



**Floor:**  
Frammenti Mix Full Lappato Rett. 60x120 - 23<sup>5</sup>/<sub>8</sub>"x47<sup>1</sup>/<sub>4</sub>"

**Wall:**  
Topazio Full Lappato Rett. 15x60 - 5<sup>7</sup>/<sub>8</sub>"x23<sup>5</sup>/<sub>8</sub>"





HOME KITCHEN



**Floor:**  
Argento Full Lappato Rett. 60x120 - 23<sup>5/8</sup>"x47<sup>1/4</sup>"

**Wall:**  
Argento Full Lappato Rett. 120x278 - 47<sup>1/4</sup>"x109<sup>7/16</sup>"  
Argento Full Lappato Rett. 10x30 - 3<sup>15/16</sup>"x11<sup>15/16</sup>"



HOME KITCHEN



**Floor:**  
Topazio Naturale Rett. 60x60 - 23<sup>5/8</sup>"x23<sup>5/8</sup>"

**Wall:**  
Frammenti Mix Full Lapp. Rett. 60x120 - 23<sup>5/8</sup>"x47<sup>1/4</sup>"



**Wall:**  
Frammenti Mix Full Lapp. Rett. 60x120 - 23<sup>5/8</sup>"x47<sup>1/4</sup>"







HOTEL

GYM  
SPA  
RESTAURANT »

**Floor:**

Topazio Lapp. Matt Rett. 60x120 - 23<sup>5/8</sup>"x47<sup>1/4</sup>"

**Wall:**

Frammenti Mix Full Lapp. Rett. 60x120 - 23<sup>5/8</sup>"x47<sup>1/4</sup>"



**Floor:**

Topazio Lapp. Matt Rett. 60x120 - 23<sup>5/8</sup>"x47<sup>1/4</sup>"

**Wall:**

Frammenti Mix Full Lapp. Rett. 60x120 - 23<sup>5/8</sup>"x47<sup>1/4</sup>"





RESTAURANT



Floor:

Frammenti Zaffi o Full Lappato Rett. 60x120 - 23<sup>3/8</sup> x 47<sup>1/4</sup>"

Wall:

Zaffi o Full Lappato Rett. 120x278 - 47<sup>3/4</sup> x 109<sup>1/8</sup>"

Frammenti Zaffi o Full Lappato Rett. 60x120 - 23<sup>3/8</sup> x 47<sup>1/4</sup>"



Resistenza, inalterabilità,  
facilità di pulizia rendono Riflessi  
la soluzione ideale anche nei  
contesti più esigenti.

Riflessi is resistant, durable and easy to clean, making  
it the perfect solution,  
even for the most demanding environments.





SHOWROOM



- Floor:**  
Argento Full Lappato Rett. 120x278 - 47<sup>1</sup>/<sub>4</sub>" x 109<sup>7</sup>/<sub>16</sub>"
- Wall:**  
Gemma Argento Full Lappato Rett. 30x30 - 11<sup>13</sup>/<sub>16</sub>" x 11<sup>13</sup>/<sub>16</sub>"
- Furniture:**  
Perla Full Lappato Rett. 120x278 - 47<sup>1</sup>/<sub>4</sub>" x 109<sup>7</sup>/<sub>16</sub>"  
Argento Full Lappato Rett. 120x278 - 47<sup>1</sup>/<sub>4</sub>" x 109<sup>7</sup>/<sub>16</sub>"  
Topazio Full Lappato Rett. 120x278 - 47<sup>1</sup>/<sub>4</sub>" x 109<sup>7</sup>/<sub>16</sub>"  
Zaffiro Full Lappato Rett. 120x278 - 47<sup>1</sup>/<sub>4</sub>" x 109<sup>7</sup>/<sub>16</sub>"





Argento Full Lappato Rett. 60x120 - 23<sup>5</sup>/<sub>8</sub>"x47<sup>1</sup>/<sub>4</sub>"





## Perla



120x278 - 47<sup>1</sup>/<sub>4</sub>"x109<sup>7</sup>/<sub>16</sub>"  
EH3Y Perla Full Lappato Rett.  
8 patterns

● 93

## Argento



120x278 - 47<sup>1</sup>/<sub>4</sub>"x109<sup>7</sup>/<sub>16</sub>"  
EH3Z Argento Full Lappato Rett.  
5 patterns

● 93

## Topazio



120x278 - 47<sup>1</sup>/<sub>4</sub>"x109<sup>7</sup>/<sub>16</sub>"  
EH40 Topazio Full Lappato Rett.  
5 patterns

● 93

## Zaffiro



120x278 - 47<sup>1</sup>/<sub>4</sub>"x109<sup>7</sup>/<sub>16</sub>"  
EH41 Zaffiro Full Lappato Rett.  
6 patterns

● 94



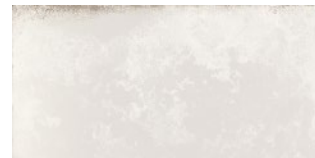
# Perla



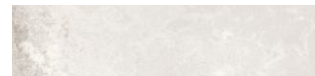
60x120 - 23<sup>5</sup>/<sub>8</sub>"x47<sup>1</sup>/<sub>4</sub>"  
**EGQK** Perla Full Lappato Rett. ● 86  
**EGQT** Perla Lapp. Matt Rett. ● 86  
**EHGP** Perla Nat. Rett. ● 79A  
 17 patterns



60x60 - 23<sup>5</sup>/<sub>8</sub>"x23<sup>5</sup>/<sub>8</sub>"  
**EHGU** Perla Nat. Rett. ● 68  
 34 patterns



30x60 - 11<sup>13</sup>/<sub>16</sub>"x23<sup>5</sup>/<sub>8</sub>"  
**EGQP** Perla Full Lappato Rett. ● 79A  
**EGQX** Perla Lapp. Matt Rett. ● 79A  
**EHGZ** Perla Nat. Rett. ● 68  
 64 patterns



15x60 - 5<sup>7</sup>/<sub>8</sub>"x23<sup>5</sup>/<sub>8</sub>"  
**EGSF** Perla Full Lappato Rett. ● 85  
**EGT0** Perla Lapp. Matt Rett. ● 85  
**EHWJ** Perla Nat. Rett. ● 77



10x30 - 3<sup>15</sup>/<sub>16</sub>"x11<sup>13</sup>/<sub>16</sub>"  
**EGSL** Perla Full Lappato Rett. ● 86  
**EGT5** Perla Lapp. Matt Rett. ● 86  
**K89F** Perla Nat. Rett. ● 79A

# Argento



60x120 - 23<sup>5</sup>/<sub>8</sub>"x47<sup>1</sup>/<sub>4</sub>"  
**EGQL** Argento Full Lappato Rett. ● 86  
**EGQU** Argento Lapp. Matt Rett. ● 86  
**EHGQ** Argento Nat. Rett. ● 79A  
 20 patterns



60x60 - 23<sup>5</sup>/<sub>8</sub>"x23<sup>5</sup>/<sub>8</sub>"  
**EHGV** Argento Nat. Rett. ● 68  
 40 patterns



30x60 - 11<sup>13</sup>/<sub>16</sub>"x23<sup>5</sup>/<sub>8</sub>"  
**EGQQ** Argento Full Lappato Rett. ● 79A  
**EGQY** Argento Lapp. Matt Rett. ● 79A  
**EHH0** Argento Nat. Rett. ● 68  
 84 patterns



15x60 - 5<sup>7</sup>/<sub>8</sub>"x23<sup>5</sup>/<sub>8</sub>"  
**EGSG** Argento Full Lappato Rett. ● 85  
**EGT1** Argento Lapp. Matt Rett. ● 85  
**EHWK** Argento Nat. Rett. ● 77



10x30 - 3<sup>15</sup>/<sub>16</sub>"x11<sup>13</sup>/<sub>16</sub>"  
**EGSM** Argento Full Lappato Rett. ● 86  
**EGT6** Argento Lapp. Matt Rett. ● 86  
**K89G** Argento Nat. Rett. ● 79A

# Topazio



60x120 - 23<sup>5</sup>/<sub>8</sub>"x47<sup>1</sup>/<sub>4</sub>"  
**EGQM** Topazio Full Lappato Rett. ● 86  
**EGQV** Topazio Lapp. Matt Rett. ● 86  
**EHGR** Topazio Nat. Rett. ● 79A  
 19 patterns



60x60 - 23<sup>5</sup>/<sub>8</sub>"x23<sup>5</sup>/<sub>8</sub>"  
**EHGW** Topazio Nat. Rett. ● 68  
 38 patterns



30x60 - 11<sup>13</sup>/<sub>16</sub>"x23<sup>5</sup>/<sub>8</sub>"  
**EGQR** Topazio Full Lappato Rett. ● 79A  
**EGQZ** Topazio Lapp. Matt Rett. ● 79A  
**EHHI** Topazio Nat. Rett. ● 68  
 80 patterns



15x60 - 5<sup>7</sup>/<sub>8</sub>"x23<sup>5</sup>/<sub>8</sub>"  
**EGSH** Topazio Full Lappato Rett. ● 85  
**EGT2** Topazio Lapp. Matt Rett. ● 85  
**EHWL** Topazio Nat. Rett. ● 77

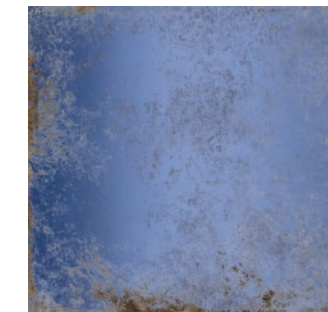


10x30 - 3<sup>15</sup>/<sub>16</sub>"x11<sup>13</sup>/<sub>16</sub>"  
**EGSN** Topazio Full Lappato Rett. ● 86  
**EGT7** Topazio Lapp. Matt Rett. ● 86  
**K89H** Topazio Nat. Rett. ● 79A

# Zaffiro



60x120 - 23<sup>5</sup>/<sub>8</sub>"x47<sup>1</sup>/<sub>4</sub>"  
**EGSA** Zaffiro Full Lappato Rett. ● 871  
**EGSW** Zaffiro Lapp. Matt Rett. ● 871  
**EHGS** Zaffiro Nat. Rett. ● 80  
 20 patterns



60x60 - 23<sup>5</sup>/<sub>8</sub>"x23<sup>5</sup>/<sub>8</sub>"  
**EHGX** Zaffiro Nat. Rett. ● 72  
 40 patterns



30x60 - 11<sup>13</sup>/<sub>16</sub>"x23<sup>5</sup>/<sub>8</sub>"  
**EGSD** Zaffiro Full Lappato Rett. ● 80  
**EGSY** Zaffiro Lapp. Matt Rett. ● 80  
**EHH2** Zaffiro Nat. Rett. ● 72  
 80 patterns



15x60 - 5<sup>7</sup>/<sub>8</sub>"x23<sup>5</sup>/<sub>8</sub>"  
**EGSJ** Zaffiro Full Lappato Rett. ● 86  
**EGT3** Zaffiro Lapp. Matt Rett. ● 86  
**EHWL** Zaffiro Nat. Rett. ● 79B



10x30 - 3<sup>15</sup>/<sub>16</sub>"x11<sup>13</sup>/<sub>16</sub>"  
**EGSP** Zaffiro Full Lappato Rett. ● 871  
**EGT8** Zaffiro Lapp. Matt Rett. ● 871  
**K89J** Zaffiro Nat. Rett. ● 80



# Gemma



30x30 - 11<sup>3</sup>/<sub>16</sub>" x 11<sup>3</sup>/<sub>16</sub>"  
**EGS1** Perla Full Lappato Rett. ● 891  
**EGS6** Perla Lapp. Matt Rett. ● 891  
 72 patterns

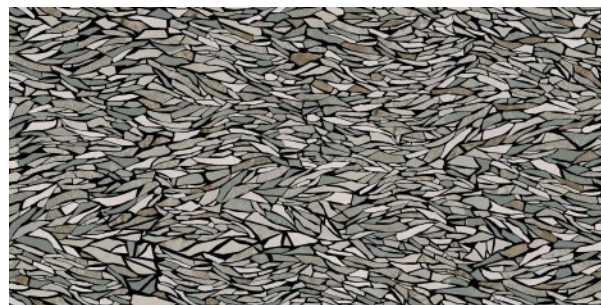


30x30 - 11<sup>3</sup>/<sub>16</sub>" x 11<sup>3</sup>/<sub>16</sub>"  
**EGS3** Argento Full Lappato Rett. ● 891  
**EGS7** Argento Lapp. Matt Rett. ● 891  
 72 patterns



30x30 - 11<sup>3</sup>/<sub>16</sub>" x 11<sup>3</sup>/<sub>16</sub>"  
**EGS4** Topazio Full Lappato Rett. ● 891  
**EGS8** Topazio Lapp. Matt Rett. ● 891  
 72 patterns

# Frammenti Mix



60x120 - 23<sup>5</sup>/<sub>8</sub>" x 47<sup>1</sup>/<sub>4</sub>"  
**EGRS** Frammenti Mix Full Lappato Rett. ● 871  
**EGRZ** Frammenti Mix Lapp. Matt Rett. ● 871  
 4 patterns



20x120 - 7<sup>7</sup>/<sub>8</sub>" x 47<sup>1</sup>/<sub>4</sub>"  
**EGRH** Frammenti Mix Full Lappato Rett. ● 88  
**EGRK** Frammenti Mix Lapp. Matt Rett. ● 88



60x120 - 23<sup>5</sup>/<sub>8</sub>" x 47<sup>1</sup>/<sub>4</sub>"  
**EGSS** Frammenti Zaffiro Full Lappato Rett. ● 891  
**EGTA** Frammenti Zaffiro Lapp. Matt Rett. ● 891  
 4 patterns



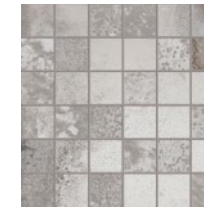
20x120 - 7<sup>7</sup>/<sub>8</sub>" x 47<sup>1</sup>/<sub>4</sub>"  
**EGSU** Frammenti Zaffiro Full Lappato Rett. ● 88  
**EGTD** Frammenti Mix Lapp. Matt Rett. ● 88

# Mosaico 5x5\*

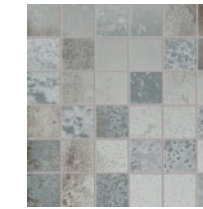
Tessere 4,8x4,8 - 1<sup>7</sup>/<sub>8</sub>" x 1<sup>7</sup>/<sub>8</sub>"



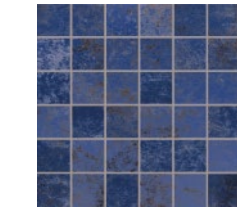
30x30 - 11<sup>3</sup>/<sub>16</sub>" x 11<sup>3</sup>/<sub>16</sub>"  
**EGV8** Perla Full Lappato ● 93  
**EGVQ** Perla Lapp. Matt ● 93  
**EHC** Perla Nat. ● 90



30x30 - 11<sup>3</sup>/<sub>16</sub>" x 11<sup>3</sup>/<sub>16</sub>"  
**EGV9** Argento Full Lappato ● 93  
**EGVR** Argento Lapp. Matt ● 93  
**EHD** Argento Nat. ● 90



30x30 - 11<sup>3</sup>/<sub>16</sub>" x 11<sup>3</sup>/<sub>16</sub>"  
**EGVA** Topazio Full Lappato ● 93  
**EGVS** Topazio Lapp. Matt ● 93  
**EHE** Topazio Nat. ● 90



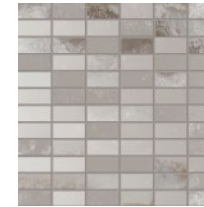
30x30 - 11<sup>3</sup>/<sub>16</sub>" x 11<sup>3</sup>/<sub>16</sub>"  
**EGVC** Zaffiro Full Lappato ● 93  
**EGVT** Zaffiro Lapp. Matt ● 93  
**EHF** Zaffiro Nat. ● 90

# Mosaico 2,5x5\*

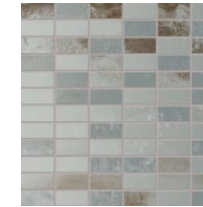
Tessere 2,3x4,8 - 7<sup>7</sup>/<sub>8</sub>" x 1<sup>7</sup>/<sub>8</sub>"



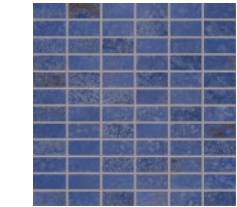
30x30 - 11<sup>3</sup>/<sub>16</sub>" x 11<sup>3</sup>/<sub>16</sub>"  
**EGVK** Perla Full Lappato ● 99  
**EGVV** Perla Lapp. Matt ● 99



30x30 - 11<sup>3</sup>/<sub>16</sub>" x 11<sup>3</sup>/<sub>16</sub>"  
**EGVL** Argento Full Lappato ● 99  
**EGVW** Argento Lapp. Matt ● 99



30x30 - 11<sup>3</sup>/<sub>16</sub>" x 11<sup>3</sup>/<sub>16</sub>"  
**EGVM** Topazio Full Lappato ● 99  
**EGVX** Topazio Lapp. Matt ● 99



30x30 - 11<sup>3</sup>/<sub>16</sub>" x 11<sup>3</sup>/<sub>16</sub>"  
**EGVN** Zaffiro Full Lappato ● 99  
**EGVY** Zaffiro Lapp. Matt ● 99

\* Su rete in fibra - On fibre mesh backing - Sur filet en fibre de verre - Auf Glasfasernetz - Sobre malla de fibra - На волоконной сетке



# Pezzi Speciali

trims - piezas especiales - formteile - piezas especiales - специальные изделия

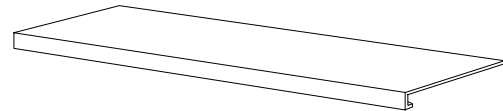


BATTISCOPA - SKIRTING  
7x60 - 2<sup>3/4</sup>"x23<sup>5/8</sup>"  
Pcs. Box 14 - ML x Box 8,40

- EGW0 Perla Full Lappato Rett. ● 18
- EGW1 Argento Full Lappato Rett. ● 18
- EGW2 Topazio Full Lappato Rett. ● 18
- EGW3 Zaffiro Full Lappato Rett. ● 18

- EGWS Perla Lapp. Matt Rett. ● 18
- EGWT Argento Lapp. Matt Rett. ● 18
- EGWU Topazio Lapp. Matt Rett. ● 18
- EGWV Zaffiro Lapp. Matt Rett. ● 18

- EHHH Perla Nat. Rett. ● 10
- EHHJ Argento Nat. Rett. ● 10
- EHHK Topazio Nat. Rett. ● 10
- EHL Zaffiro Nat. Rett. ● 10



GRADONE - STEP  
33x120x3,2x3,2 - 12<sup>5/16</sup>"x47<sup>1/4</sup>"x1<sup>1/4</sup>"x1<sup>1/4</sup>"  
Pcs. Box 2 - ML x Box 2,40

- EGWA Perla Full Lappato Rett. ● 97
- EGWC Argento Full Lappato Rett. ● 97
- EGWD Topazio Full Lappato Rett. ● 97
- EGWE Zaffiro Full Lappato Rett. ● 97

- EGX2 Perla Lapp. Matt Rett. ● 97
- EGX3 Argento Lapp. Matt Rett. ● 97
- EGX4 Topazio Lapp. Matt Rett. ● 97
- EGX5 Zaffiro Lapp. Matt Rett. ● 97

- EHHT Perla Nat. Rett. ● 96
- EHHU Argento Nat. Rett. ● 96
- EHHV Topazio Nat. Rett. ● 96
- EHHW Zaffiro Nat. Rett. ● 96

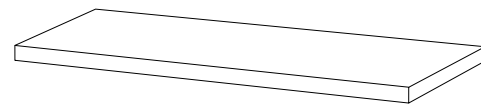


BATTISCOPA - SKIRTING  
4,6x120 - 1<sup>3/16</sup>"x47<sup>1/4</sup>"  
Pcs. Box 6 - ML x Box 7,20

- EGW5 Perla Full Lappato Rett. ● 30
- EGW6 Argento Full Lappato Rett. ● 30
- EGW7 Topazio Full Lappato Rett. ● 30
- EGW8 Zaffiro Full Lappato Rett. ● 30

- EGWX Perla Lapp. Matt Rett. ● 30
- EGWY Argento Lapp. Matt Rett. ● 30
- EGWZ Topazio Lapp. Matt Rett. ● 30
- EGX0 Zaffiro Lapp. Matt Rett. ● 30

- EHHN Perla Nat. Rett. ● 18
- EHHP Argento Nat. Rett. ● 18
- EHHQ Topazio Nat. Rett. ● 18
- EHR Zaffiro Nat. Rett. ● 18



ANGOLARE DX / SX - CORNER TILE DX / SX  
33x120x3,2x3,2 - 12<sup>5/16</sup>"x47<sup>1/4</sup>"x1<sup>1/4</sup>"x1<sup>1/4</sup>"  
Pcs. Box 1 - ML x Box 1,20

- EGWG/EGWM Perla Full Lappato Rett. ● 101
- EGWH/EGWN Argento Full Lappato Rett. ● 101
- EGWJ/EGWP Topazio Full Lappato Rett. ● 101
- EGWK/EGWQ Zaffiro Full Lappato Rett. ● 101

- EGX7/EGXD Perla Lapp. Matt Rett. ● 101
- EGX8/EGXE Argento Lapp. Matt Rett. ● 101
- EGX9/EGXF Topazio Lapp. Matt Rett. ● 101
- EGXA/EGXG Zaffiro Lapp. Matt Rett. ● 101

- EHHY/EHJ3 Perla Nat. Rett. ● 98
- EHHZ/EHJ4 Argento Nat. Rett. ● 98
- EHHJ0/EHJ5 Topazio Nat. Rett. ● 98
- EHHJ1/EHJ6 Zaffiro Nat. Rett. ● 98

# RIFLESSI

Dry - Pressed Ceramic Tiles ISO 13006 Annex G - UNI EN 14411 Annex G - Bla UGL



CARATTERISTICHE TECNICHE		NORMA	VALORI	
Technical Features - Caracteristiques Techniques - Technische Eigenschaften Technische Eigenschaften - Caracteristicas Tecnicas - Технические Характеристики		Standard - Norme Norm - Norma - Норма	Value - Valeur Vorgabe - Valor - Средние	
	<b>ASSORBIMENTO D'ACQUA (VALORE MEDIO IN %)</b> Water absorption (Average value expressed in %) - Absorption d'eau (Valeur moyenne en %) Wasseraufnahme (Durchschnittswert in %) - Absorción de agua (Valor medio en %) - Поглощение воды	UNI EN ISO 10545/3 ≤ 0,5 % ASTM C373	CONFORME COMPLIANT	
	<b>RESISTENZA ALLA FLESSIONE</b> Modulus of rupture - Resistance a la flexion - Biegefestigkeit - Resistencia a la flexion - Прочность на изгиб	SPESSORE UNI EN ISO 10545/4	<b>6,5 mm</b> ≥ 35 N/mm <sup>2</sup>	<b>10 mm</b> ≥ 45 N/mm <sup>2</sup>
	<b>FORZA DI ROTTURA</b> Breaking strength - Résistance à la rupture - Bruchlast - Resistencia a la rotura - Разрывное усилие	UNI EN ISO 10545/4 ASTM C648	≥ 700 N 250 Lbs	≥ 2000 N 400 Lbs
	<b>RESISTENZA AL GELO</b> Frost resistance - Résistance au gel - Frostbeständigkeit Resistencia a las heladas - Морозостойкость	UNI EN ISO 10545/12 ASTM C1026	CONFORME UNAFFECTED	
	<b>RESISTENZA CHIMICA</b> <b>AD ALTE E BASSE CONCENTRAZIONI DI ACIDI E BASI</b> Chemical resistance to high and low acid and basic concentrations Résistance chimique aux hautes et basses concentrations d'acides et de bases Chemikalienfestigkeit bei hohen und niedrigen Konzentrationen von Säuren und Basen Resistencia química con concentraciones altas y bajas de ácidos y bases Химическая стойкость к высоким и низким концентрациям кислот и щелочей	UNI EN ISO 10545/13 ASTM C-650	A - LA - HA UNAFFECTED	
	<b>RESISTENZA ALLE MACCHIE</b> Stain resistance - Résistance aux taches - Fleckenbeständigkeit Resistencia a las manchas - Стойкость к образованию пятен	UNI EN ISO 10545/14 CTI 81-7D	5 NO EVIDENT VARIATION	
	<b>COEFFICIENTE DI ATTRITO</b> Slip resistance - Coefficient de glissement - Rutschfestigkeit Barfußbereich Coeficiente de atrito medio - Коэффициент трения	DIN 51130 DIN 51097 ANSI A 137.1- 2012 DCOF (SECTION 9.6) B.C.R.A. AS 4586: 2013 Slip resistance classification of new pedestrian surface materials BS 7976-2: 2002 Pendulum testers ENV 12633-2006 Method of determination of unpolished and polished slip/skid resistance value	<b>NAT.</b> R10 B (A+B) WET ≥ 0,50 ≥ 0,40 P2 - -	<b>FULL LAPP.</b> - - - - - -
			<b>LAPP. MATT</b> - - WET ≥ 0,42 - - -	

Per maggiori chiarimenti sui dati tecnici e sulla garanzia consultare il catalogo generale in vigore. - For further information on technical specifications, please consult our up-dated general catalogue. - Pour toutes informations supplémentaires sur les données techniques et sur les garanties, veuillez consulter le catalogue general en vigueur. - Für weitere Informationen über technische Daten und Garantie beziehen sie sich bitte auf den aktuellen Gesamtkatalog. - Para ultiores informaciones sobre los datos técnicos y la garantía, vease el catalogo general en vigor. - Более подробную информацию о технических данных и гарантии смотрите в действующем сводем катал.



Formato Size Format Format Tamaño cm	Spessore Thickness Epaisseur Stärke Espesor mm	Pz. x Mq. Pieces x Sqm Pcs / M <sup>2</sup> Stk. x Qm Pzs x Mc.	Pz. x Scat. Pieces x Box Pcs / Bte Stk. x Krt. Pzs x Caja	Mq. x Scat. Sqm x Box M <sup>2</sup> / Bte Qm x Krt. Mc. x Caja	Peso x Scat. Weight x Box Poids / Bte Gewicht x Krt. Peso x Caja Kg	Scat. x Pal. Boxes x Pal. Bte / Pal. Krt. x Pal. Cajas x Pal.	Mq. x Pal. Sqm x Pal. M <sup>2</sup> / Pal. Qm x Pal. Mc. x Pal.	Peso x Pal. Weight x Pal. Poids / Pal. Gewicht x Pal. Peso x Pal. Kg
120x278 Full Lapp.	6,5	0,30	1	3,336	58,03		vedi sotto	
60x120 Naturale - Full Lapp. - Lapp matt.	10	1,39	2	1,440	35,75	36	51,84	1287
60x60 Naturale	10	2,78	3	1,080	25,50	40	43,20	1020
30x60 Naturale - Full Lapp. - Lapp matt.	10	5,56	6	1,080	24,50	40	43,20	980
15x60 Full Lapp. - Lapp matt. - Naturale	10	11,11	12	1,034	25,43	50	51,68	1250
10x30 Full Lapp. - Lapp matt. - Naturale	10	33,33	25	0,706	16,96	72	50,80	1200
60X120 Decoro Frammenti Full Lapp. - Lapp matt.	10	1,39	2	1,395	34,43	36	50,21	1239
20X120 Decoro Frammenti Full Lapp. - Lapp matt.	10	4,17	4	0,922	23,39	40	36,88	936
30X30 Decoro Gemma Full Lapp. - Lapp matt.	10	11,11	12	1,037	25,50	40	41,49	1020
30x30 Mosaico 5x5 Naturale - Full Lapp. - Lapp matt.	10	11,11	5	0,450	10,88	60	27,00	653
30X30 Mosaico 2,5x5 Full Lapp. - Lapp matt.	10	11,11	5	0,450	12,88	60	27,00	773

## Slabs 120x278 Imballi

Articolo Item Reference Artikel Articulo Артикула	Dimensione (cm) Size (cm) Format (cm) Format (cm) Tamaño (cm) Формат (cm)	Nr. Lastre No. of Slabs Nbre Dalles Anz. Platten Nº de Placas Кол. Плит	Mq. x Imballo sqm per Pack m <sup>2</sup> / Emballage qm pro Verpackung m <sup>2</sup> por embalaje Кв.м. x упаковки	Peso Imballo (Kg) Weight of Packaging (kg) Poids Emballage (kg) Gewicht Verpackung (kg) Peso embalaje (kg) Вес упаковки (кг)	Peso Imballo+Lastre (Kg) Weight of Packaging + Slabs (kg) Poids Emballage+Dalles (kg) Gewicht Verpackung+Platten (kg) Peso embalaje + placas (kg) Вес упаковки + плит (кг)
120x278 Cassa - Crate - Caisse Kiste - Caja - Ящик	140x291x41h	18	60,05	120	1201
120x278 Cavalletto A-Frame - Chevalet de transport - Transportgestell - Caballette - Подставка	75x288x160h	40	133,44	180	2582





## French

### P. 1

Rifle si propose une collection inhabituelle inspirée des surfaces de miroirs anciens, oxydées par les agents atmosphériques et ternies au fil du temps. Chaque détail est mis en valeur par les finitions Full Lappato, Lappato Matt et Naturale qui donnent des effets esthétiques et de matière originaux. Déclinée en quatre couleurs : Perla, Argento, Topazio et Zaffi o, la collection est idéale pour les environnements publics et privés d'impact visuel garanti. Le décor Frammenti, composé de fragments de miroirs harmonieusement disposés en surface, et le décor Gemma, qui reproduit des décorations stylisées anciennes, ornent la collection en ajoutant de nouveaux reflets de style.

### P. 8

Les reflets harmonisés en surface apportent une profondeur esthétique et une luminosité raffinée.

### P. 22

Résistante, inaltérable et facile à nettoyer, Narciso est la solution idéale même pour les applications plus exigeantes.

## Deutsche

### P. 1

Rifle si ist eine neue Kollektion, die sich an den Oberflächen von antikisierten, durch Witterungseinflü se oxidierten und von der Zeit mattierten Spiegeln inspiriert. Ein jedes Detail wird anhand der Oberflächenausführung Full Lappato, Lappato Matt und Naturale hervorgehoben, die originelle ästhetische und stoffliche Effekte erzeugen. Die in den vier Farben Perla, Argento, Topazio und Zaffi o ausgeführte Kollektion eignet sich hervorragend für öffentliche und private Bereiche mit starker visueller Wirkung. Das aus harmonisch auf der Oberfläche angeordneten Spiegelsplittern bestehende Dekor Frammenti und das antike stilisierte Dekorationen aufgreifende Dekor Gemma verziern die Kollektion und fügen weitere stilistische Refl xe hinzu.

### P. 8

Fein abgestimmte Oberflächenreflexe verleihen optische Tiefe und elegante Helligkeit.

### P. 22

Beständigkeit, Langlebigkeit und Reinigungsfreundlichkeit machen Narciso auch in anspruchsvollsten Bereichen zur idealen Lösung.

## Espanol

### P. 1

Rifle si propone una inédita colección inspirada en las superficies de espejos de efecto antiguo, oxidados por los agentes atmosféricos y empañados por el paso del tiempo. Cada detalle se ve puesto de relieve por los acabados Full Lappato, Lappato Matt y Naturale, que transmiten efectos estéticos y matéricos originales. Articulada en cuatro colores —Perla, Argento, Topazio y Zaffi o—, la colección resulta ideal para revestir ámbitos públicos y privados de gran impacto visual. La decoración Frammenti, realizada con esquirlas de espejos armoniosamente dispuestas sobre la superficie, y la decoración Gemma, que reproduce antiguos ornamentos estilizados, adornan la colección aportando reflejo adicionales de notable estilo.

### P. 8

Los reflejos superficiales calibrados aportan profundidad estética y una elegante luminosidad.

### P. 22

Por su resistencia, inalterabilidad y facilidad de limpieza, Narciso es la solución ideal incluso para los entornos más exigentes.

## Russian

### P. 1

Riflessi предлагает новую коллекцию, вдохновением для которой послужили старинные зеркала, окисленные осадками и помутненные течением времени. Каждая деталь подчеркивается отделками Full Lappato, Lappato Matt и Naturale, которые воссоздают оригинальные эстетические и фактурные эффекты. Эта коллекция, предлагаемая в четырех цветах Perla, Argento, Topazio и Zaffi o, отлично подходит для оформления общественных и частных пространств с ярким визуальным эффектом. Декор Frammenti, полученный из осколков зеркала, гармонично распределенных по поверхности, и декор Gemma, воспроизводящий старинный стилизованный декор, дополняют коллекцию, наделяя ее новыми элементами стиля.

### P. 8

Выверенные отблески поверхности наделяют ее эстетической глубиной и элегантным свечением.

### P. 22

Прочность, неизменность, простота ухода превращают Narciso в великолепное решение даже при наличии самых высоких требований.



ACIF IS A BRAND OF EMILCERAMICA S.r.l. a socio unico	SEDE COMMERCIALE/AMMINISTRATIVA
info@emilceramicagroup.it	Via Chiarola Nuova, 29 - 41042 Fiorano Modenese (Mo) - Italy T 0536 835111